

# Maitland Mental Health Rehabilitation Project (MMH)

## Landscape Concepts & Plant Quantities

14th February 2025

### Package Contents

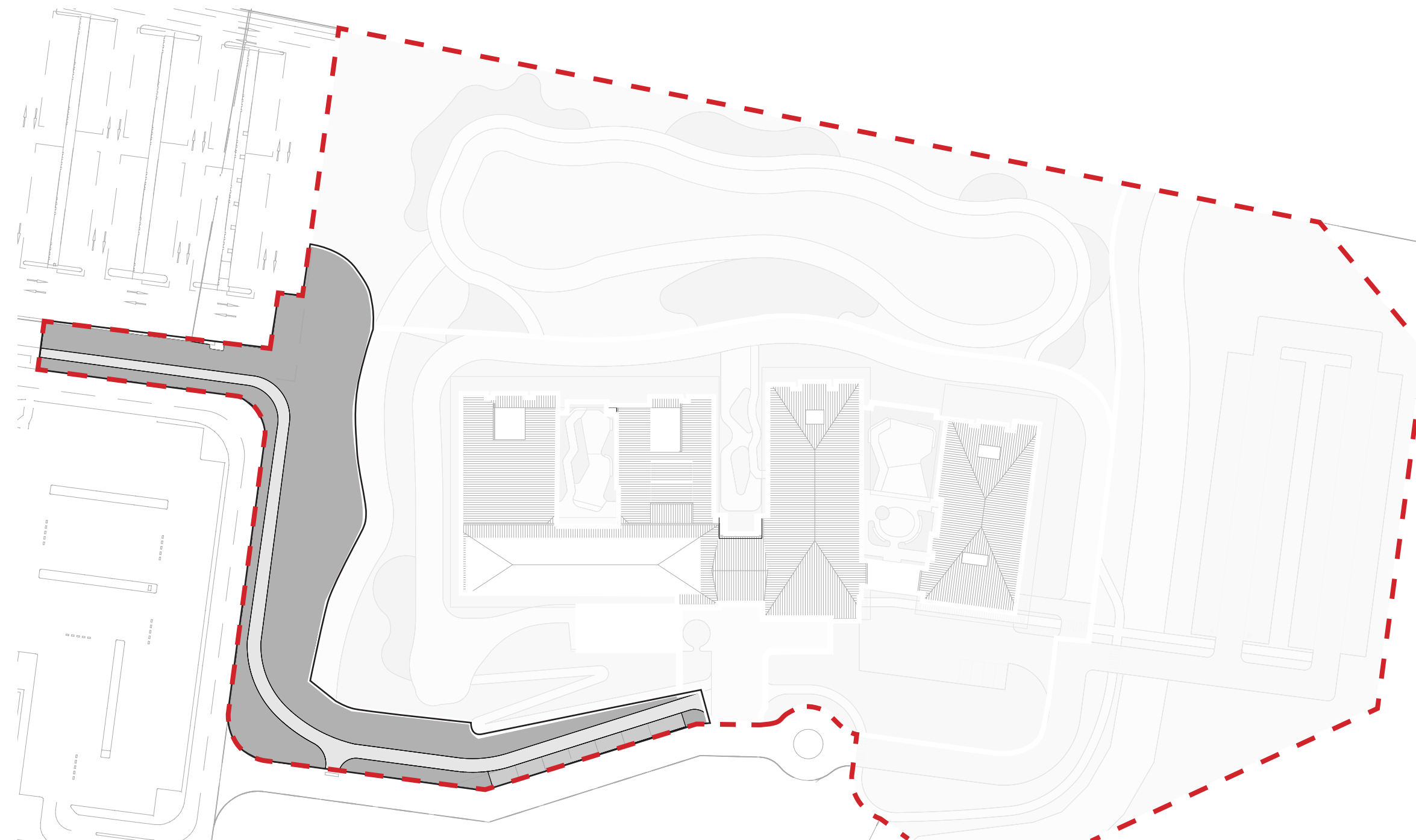
- Page 1. Landscape Drawing - 001 - Hospital Connection
- Page 2. Landscape Drawing - 002 - Entry Landscape
- Page 3. Landscape Drawing - 003 – Building Surrounds
- Page 4. Landscape Drawing - 004 – General Landscape
- Page 5. Landscape Drawing - 005 – Upgraded stormwater basin
- Page 6. Landscape Drawing - 006 – Lower Ground Courtyard West
- Page 7. Landscape Drawing - 007 - Lower Ground Courtyard East
- Page 8. Landscape Drawing - 008 – Ground Floor Courtyard East



# Landscape Drawing - 001

## Hospital Connection

- Inclusions
- Concrete pathway
  - Canopy trees along path edge
  - Swale with planting.
  - Native low maintenance species.
  - Seating along path if necessary



Hospital Connection Total		3,708 m²
Key	Type	Total Area
<div></div>	Asphalt car parks	143 m²
<div></div>	Concrete footpath	628 m²
<div></div>	Planting & Grassland	2,937 m²

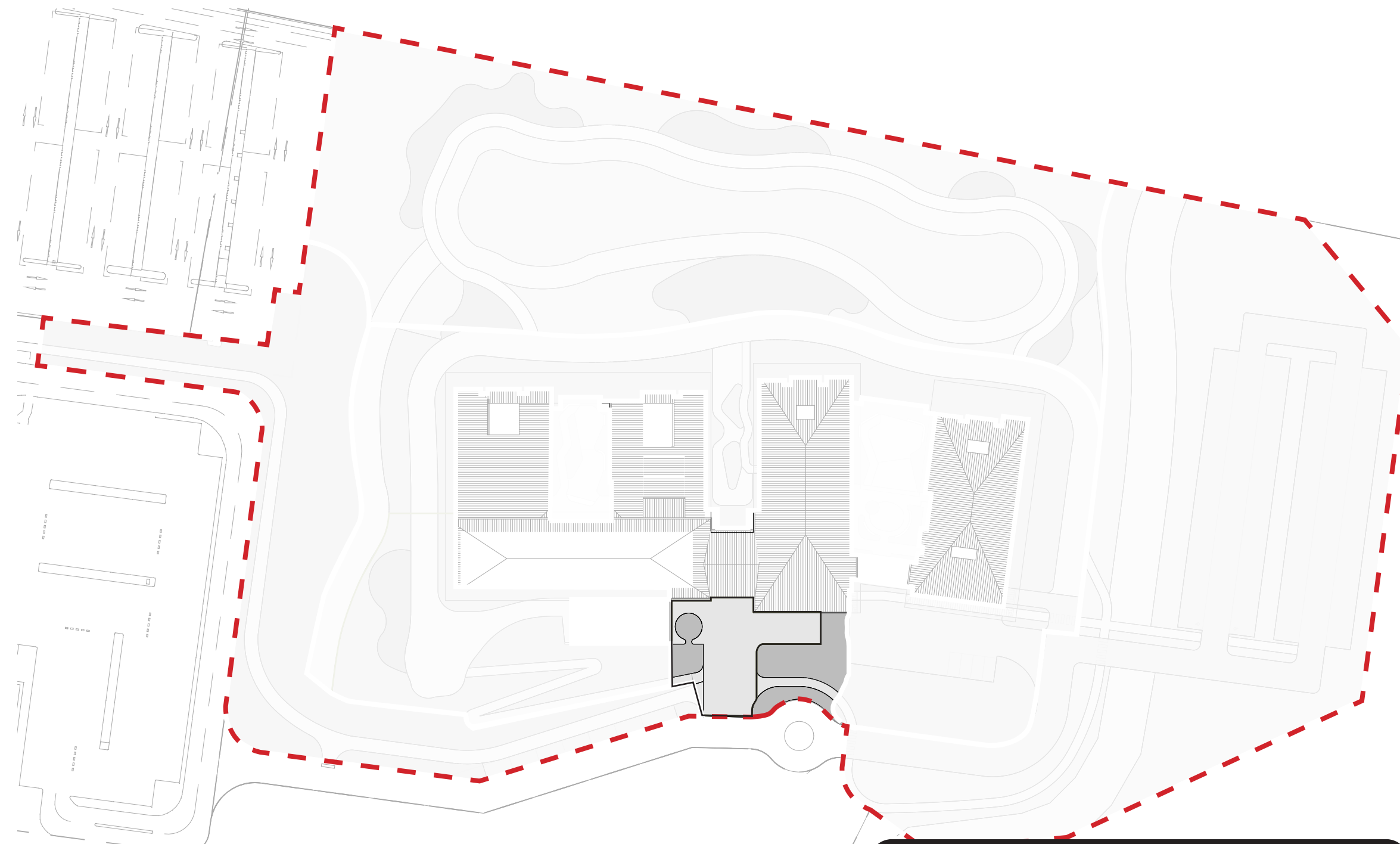
Scale: 1:1000 @ A3

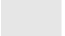

Planting Quantities (Indicative only)				
Trees				
CODE	BOTANICAL NAME	CENTRES	POT SIZE	QUANTITY
ACb	Angophora costata	TBC	100L	7
AD	Acacia Decurrens		25L	12
AF	Angophora floribunda		45L	3
CE	Corymbia eximia		400L	1
CG	Casuarina glauca		45L	3
CMb	Corymbia maculata		45L	8
TLb	Tristania laurina		100L	8
WFA	Waterhousea floribunda 'Green Avenue'		100L	7
				49
Understorey				
CODE	SPECIES	CENTRES(mm)	POT SIZE	
General Mix	Westringia fruticosa Myoporum parvifolium Lomandra 'Tanika' Lomandra longifolia Doryanthes excelsa Chryscephalum apiculatum Carex appressa Juncus usitatus	600 = 3 plants/m2	140mm	
Hydromulch Dryland Grass	Themeda australis Bothriochloa bladhii (Forest Bluegrass); Astrebla lappacea (Curly Mitchell Grass); Heteropogon contortus (Black spear grass); Lomandra longifolia (Spiny-head Mat-rush); Austrostipa spp. (Speargrass);			

# Landscape Drawing - 002

## Entry landscape

- Inclusions
- Canopy trees over path and entry point
  - Accessible seating option at entry with backrests and armrests
  - Feature endemic Australian planting at entry
  - Irrigated planting.



Hospital Connection Total		969 m <sup>2</sup>
Key	Type	Total Area
	Concrete footprint	451 m <sup>2</sup>
	Planting	441 m <sup>2</sup>

Scale: 1:1000 @ A3 ⊕

### Planting Quantities (Indicative only)

Trees				
CODE	BOTANICAL NAME	CENTRES	POT SIZE	QUANTITY
ACa	Angophora costata	TBC	400L	2
ACb	Angophora costata		100L	1
CE	Corymbia eximia		400L	1
CMA	Corymbia maculata		400L	5
CMB	Corymbia maculata		45L	4
TLa	Tristania laurina		500L	3
				16

Understorey			
CODE	SPECIES	CENTRES(mm)	POT SIZE
Entry Mix	Banksia spinulosa Callistemon salignus Goodenia ovata Dianella revoluta Dichondra repens Viola hederacea Xanthorrhoea macronema Myoporum parvifolium Lomandra 'Tanika' Chryscephalum apiculatum Billardiera scandens Cissus antarctica Clematis aristata Hardenbergia violacea Hibbertia scandens	400 = 6 plants/m2	200mm

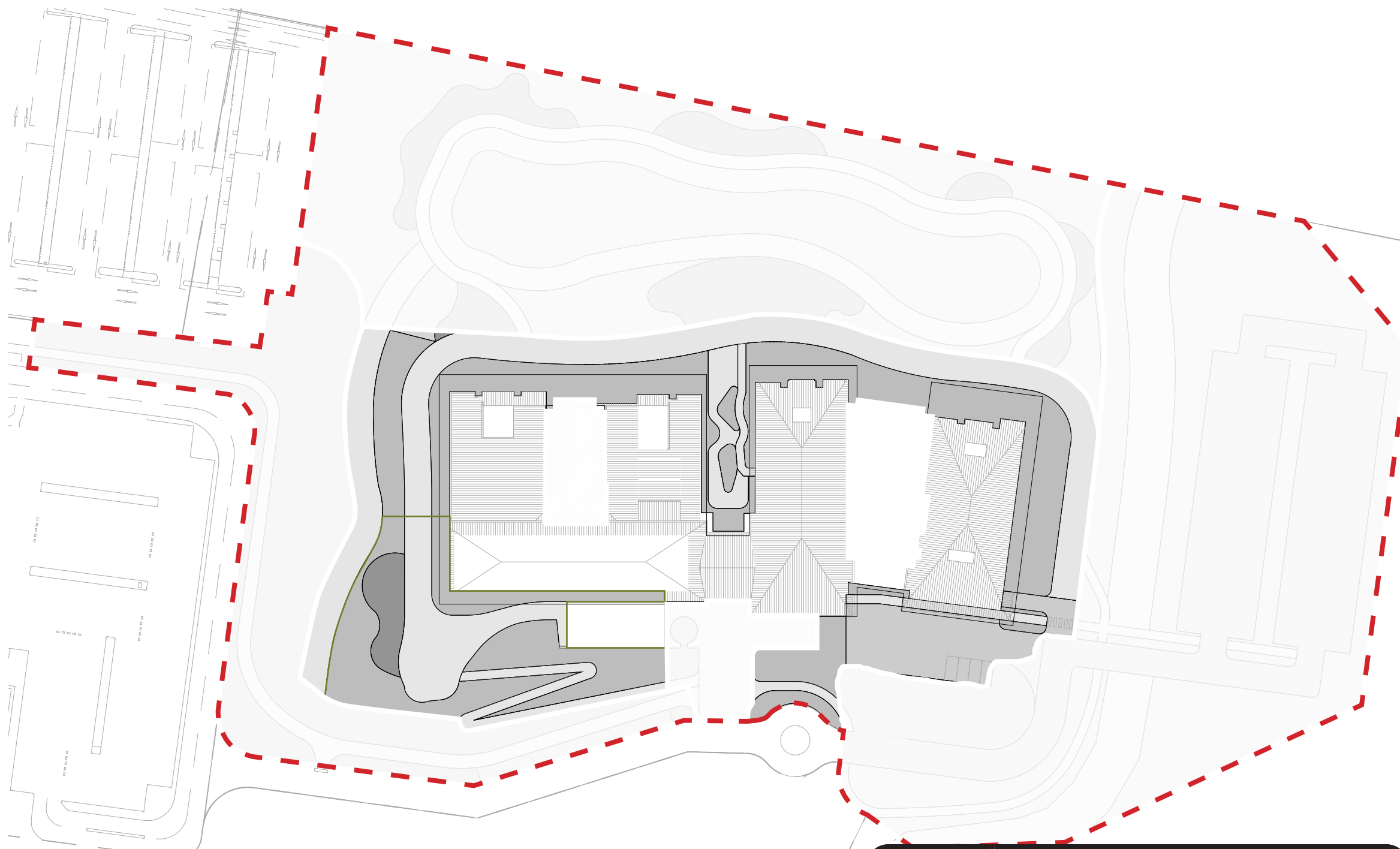
# Landscape Drawing - 003

## Building Surrounds

- Inclusions
- Canopy trees
  - Concrete pathway ramped connection
  - Sandstone log seating in range of typical sizes.
  - Loop track around building that doubles as emergency vehicle access route
  - Connecting pathways to building entry points.
  - Feature trees for privacy and buffer views between bedrooms in central courtyard.
  - Include irrigation in planting.

Building Surrounds Total Area:		7,890 m²
Key	Type	Total Area
<div></div>	Concrete pedestrian footpaths	434 m²
<div></div>	Loop Fire Trail	1,866 m²
<div></div>	Asphalt	671 m²
<div></div>	Decomposed granite	182 m²
<div></div>	Swale (planting only)	498 m²
	Dryland	458 m²
<div></div>	Lawn	183 m²
	Cut Rock	690 m²
<div></div>	Planting	2634 m²

Scale: 1:1000 @ A3 ⊕



# Planting Quantities (Indicative only)

## Trees

CODE	BOTANICAL NAME	CENTRES	POT SIZE	QUANTITY
AD	Acacia Decurrens	TBC	25L	14
CE	Corymbia eximia		400L	1
CG	Casuarina glauca		45L	12
CMB	Corymbia maculata		45L	2
EP	Eucalyptus punctata		45L	1
ER	Elaeocarpus reticulatus		100L	5
FR	Ficus rubiginosa		200L	1
TLb	Tristania laurina		100L	2
Wfb	Waterhousea floribunda 'Green Avenue'		400L	2
				40

## Understorey

CODE	SPECIES	CENTRES(mm)	POT SIZE
Basin Surrounds & Swale	Carex appressa Lomandra 'Tanika' Lomandra longifolia	600 = 3 plants/m2	75mm
General Mix	Westringia fruticosa Myoporum parvifolium Lomandra 'Tanika' Lomandra longifolia Doryanthes excelsa Chrysocephalum apiculatum Carex appressa Juncus usitatus	600 = 3 plants/m2	140mm

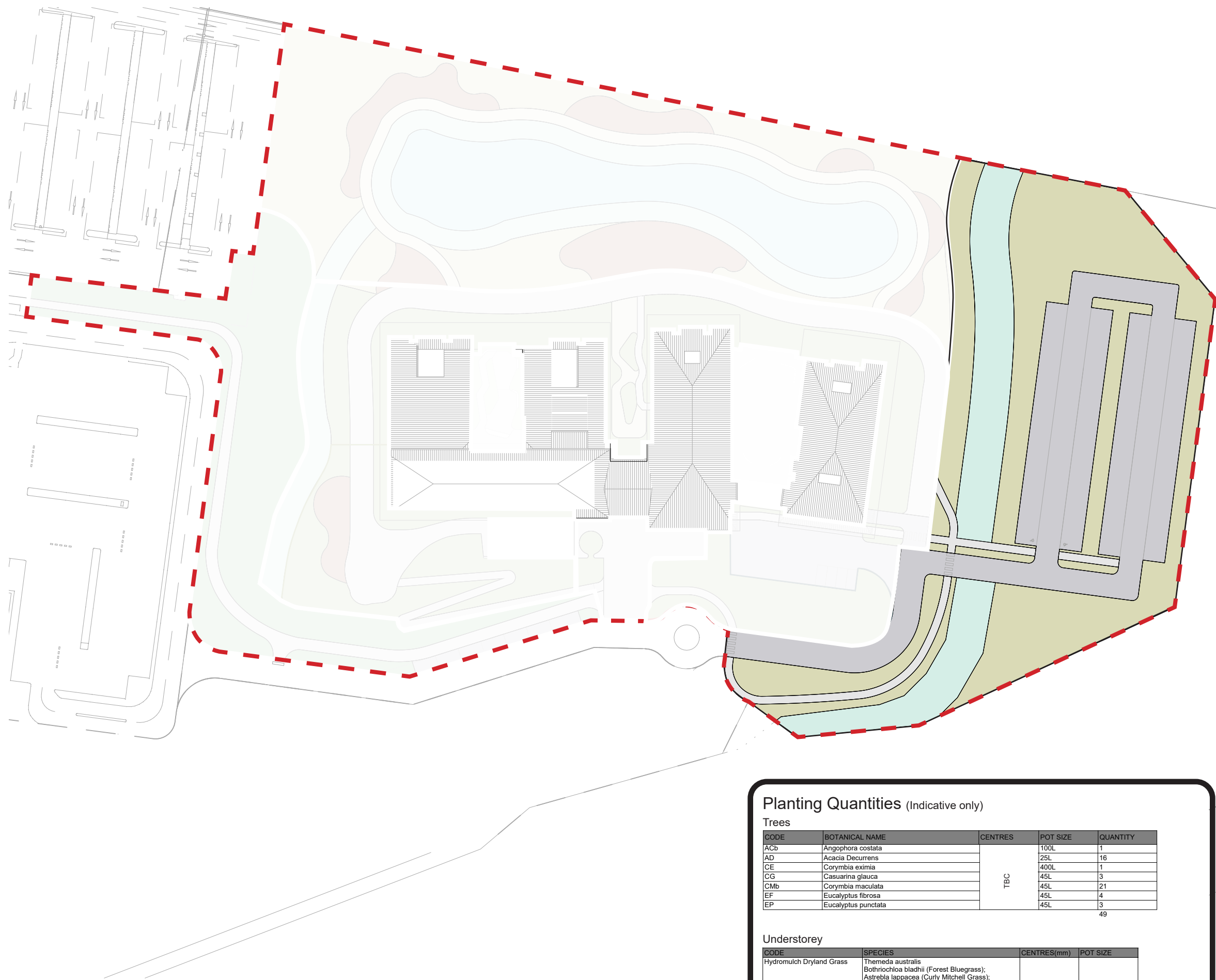
# Landscape Drawing - 004

## General Landscape

- Inclusions
- Native planting to perimeter of site - wild grasses, few trees and low maintenance + low cost species selection and spacing.
  - Connecting pathways to car park.
  - Wetland planting in swale
  - Canopy trees that provide shade amenity to the car park. Native, low maintenance species.
  - No irrigation to dry land grass planting

Open Landscape Total Area:		9,219 m <sup>2</sup>
Key	Type	Total Area
<div></div>	Asphalt car parks and roads	3,214 m <sup>2</sup>
<div></div>	Concrete footpaths	287 m <sup>2</sup>
<div></div>	Dry Grassland	4,868 m <sup>2</sup>
<div></div>	Swale (planting only)	850 m <sup>2</sup>

Scale: 1:1000 @ A3 ⊕



# Planting Quantities (Indicative only)

## Trees

CODE	BOTANICAL NAME	CENTRES	POT SIZE	QUANTITY
ACb	Angophora costata	TBC	100L	1
AD	Acacia Decurrens		25L	16
CE	Corymbia eximia		400L	1
CG	Casuarina glauca		45L	3
CMb	Corymbia maculata		45L	21
EF	Eucalyptus fibrosa		45L	4
EP	Eucalyptus punctata		45L	3

49

## Understorey

CODE	SPECIES	CENTRES(mm)	POT SIZE
Hydromulch Dryland Grass	Themeda australis Bothriochloa bladhii (Forest Bluegrass); Astrebla lappacea (Curly Mitchell Grass); Heteropogon contortus (Black spear grass); Lomandra longifolia (Spiny-head Mat-rush); Austrostipa spp. (Speargrass);		



# Landscape Drawing - 005

## Upgraded stormwater basin

- Inclusions
- Bio-retention basin with wetland planting and fencing (see architects plan)
  - Permeable pathway around perimeter of basin
  - Native planting to perimeter of site - wild grasses, few trees and low maintenance + low cost species selection and spacing.
  - Feature canopy trees that provide shade amenity to seating at pause points.
  - Low cost permeable pause points surrounding basin including sandstone log seating in a range of typical sizes. (approx 3-5 seats per pause point)
  - No irrigation to dry land grass planting

Open Landscape Total Area:		8,975 m²
Key	Type	Total Area
<div></div>	Dry Grassland	3041 m²
<div></div>	Decomposed granite footpath	686 m²
<div></div>	Decomposed granite	412 m²
<div></div>	Planting	1,066 m²
<div></div>	Swale (planting only)	1,670 m²
<div></div>	Water	2,102 m²

Scale: 1:1000 @ A3 ⊕



### Planting Quantities (Indicative only)

#### Trees

CODE	BOTANICAL NAME	CENTRES	POT SIZE	QUANTITY
ACb	Angophora costata	TBC	100L	4
AD	Acacia Decurrens		25L	10
AF	Angophora floribunda		45L	1
CE	Corymbia eximia		400L	2
CG	Casuarina glauca		45L	11
CMb	Corymbia maculata		45L	24
EP	Eucalyptus punctata		45L	2
FR	Ficus rubiginosa		200L	2
TLb	Tristania laurina		100L	1
				57

#### Understorey

CODE	SPECIES	CENTRES(mm)	POT SIZE
Basin Surrounds & Swale	Carex appressa Lomandra 'Tanika' Lomandra longifolia	600 = 3 plants/m2	75mm
BasinPlanting	Wetland species (Ecologist to confirm) Baumea articulata Baumea juncea Baumea rubiginosa Cyperus polystachyos Ficinia nodosa Gahnia clarkii Juncus prismatocarpus Juncus ustulatus Lepironia articulata Paspalum distichum Schoenoplectus validus Typha Orientalis	600 = 3 plants/m2	75mm
Hydromulch Dryland Grass	Themeda australis Bothriochloa bladhii (Forest Bluegrass); Astrebla lappacea (Curly Mitchell Grass); Heteropogon contortus (Black spear grass); Lomandra longifolia (Spiny-head Mat-rush); Austrostipa spp. (Speargrass);		

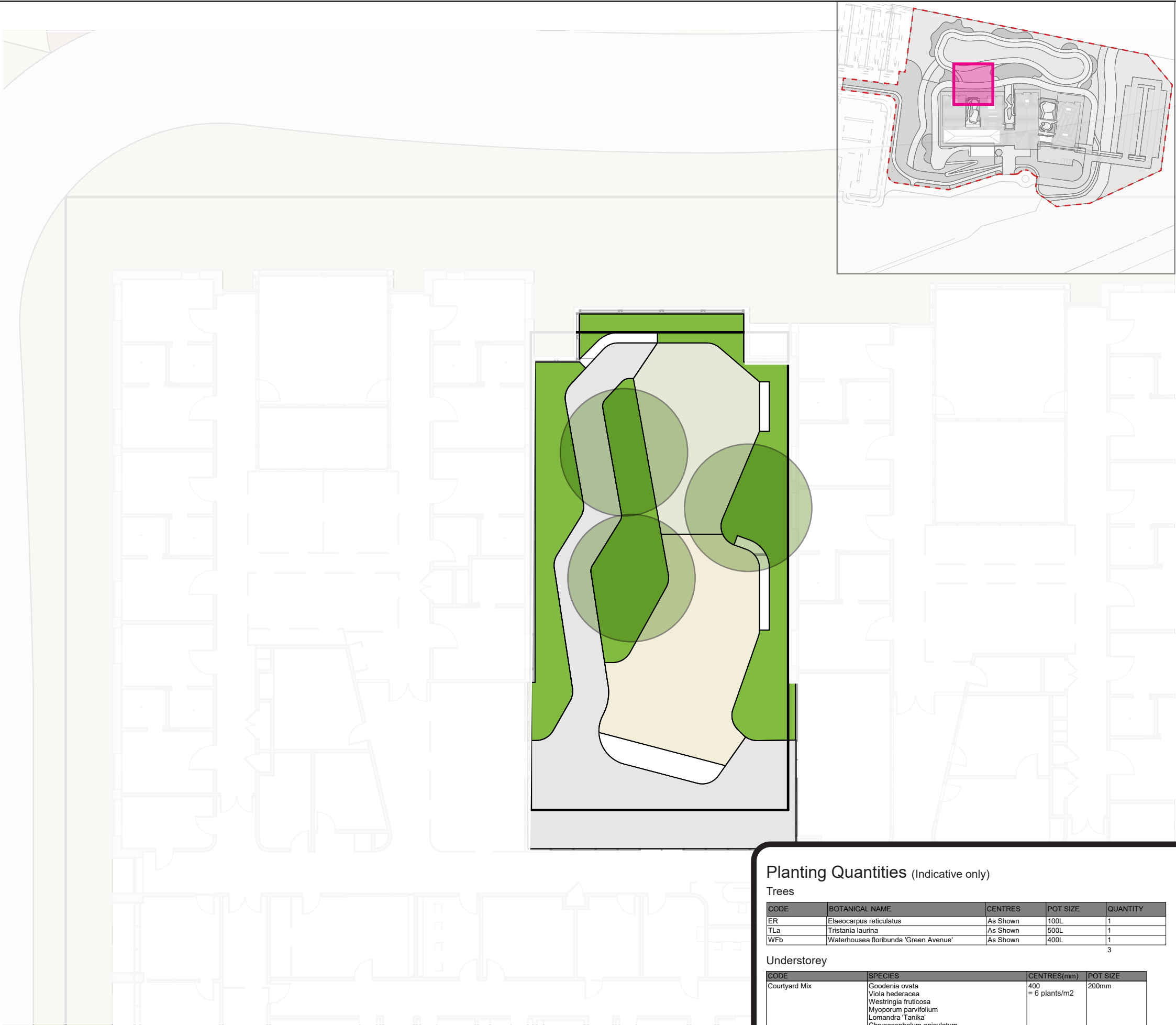
# Landscape Drawing - 006

## Lower Ground Courtyard West

- Inclusions
- Accessible 1:20 ramp
  - 1x feature tree
  - Large shrubs (up to 2m tall) in front of adjacent bedroom windows
  - Irrigated planting
  - Endemic planting in garden beds
  - Accessible seating with backrests and arm rests as shown
  - Steps as shown
  - 1x built in BBQ
  - Activity zone: options may include basket-ball half court, table tennis or other recreation amenity.

Lower Ground Courtyard West		327 m²
Total Area:		
Key	Type	Total Area
<div></div>	Concrete footpath and ramp	104 m²
<div></div>	Decomposed granite activity zone	63 m²
<div></div>	Lawn	47 m²
<div></div>	Planting	113 m²
<div></div>	Indicative feature tree	

Scale: 1:200 @ A3



### Planting Quantities (Indicative only)

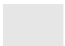
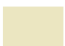



Trees				
CODE	BOTANICAL NAME	CENTRES	POT SIZE	QUANTITY
ER	Elaeocarpus reticulatus	As Shown	100L	1
TLa	Tristania laurina	As Shown	500L	1
WFb	Waterhousea floribunda 'Green Avenue'	As Shown	400L	1
				3

Understorey			
CODE	SPECIES	CENTRES(mm)	POT SIZE
Courtyard Mix	Goodenia ovata Viola hederacea Westringia fruticosa Myoporum parvifolium Lomandra 'Tanika' Chryscephalum apiculatum Carex appressa Dianella caerulea Hymenosporum 'Gold Nugget'	400 = 6 plants/m2	200mm

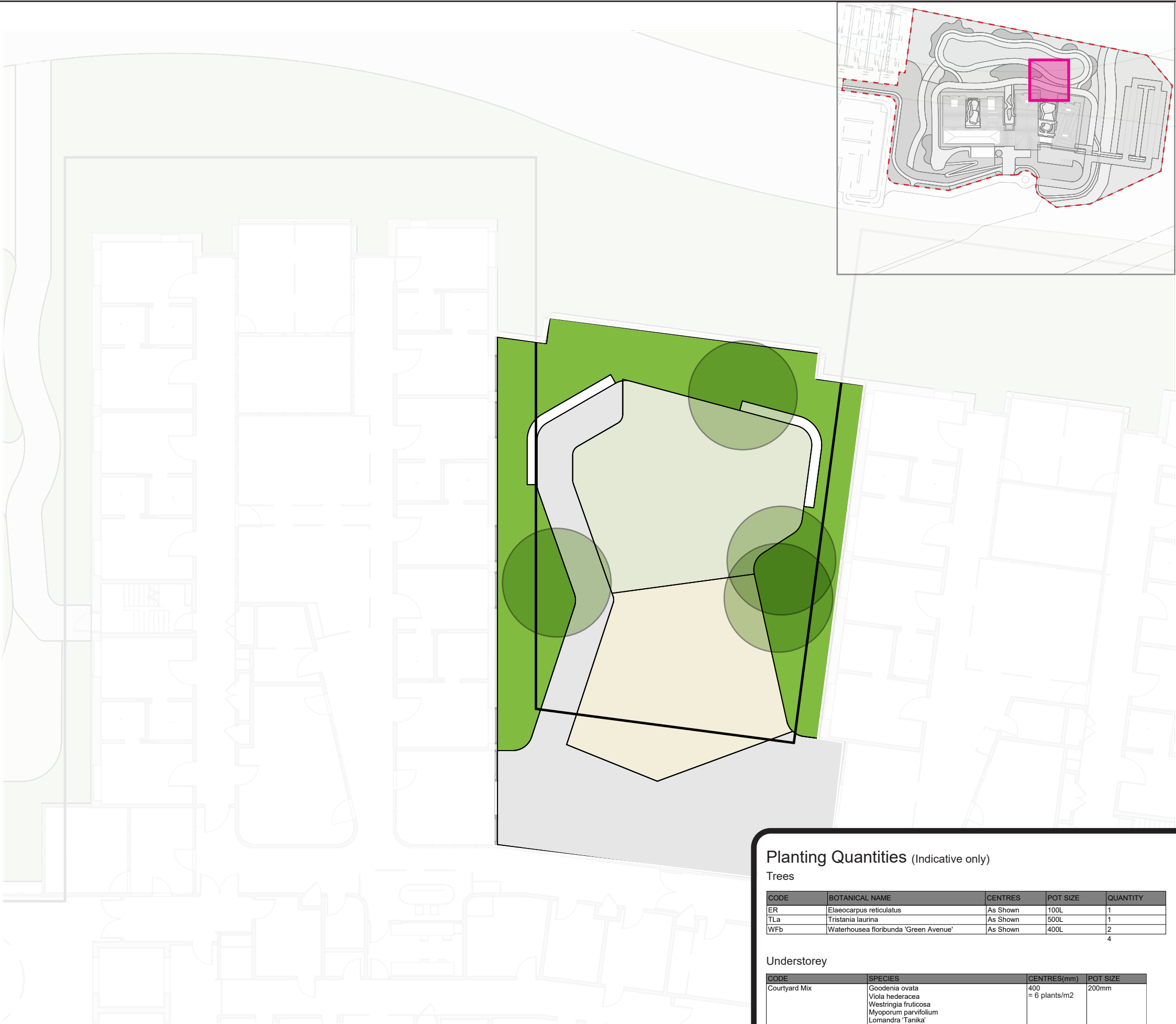
# Landscape Drawing - 007

## Lower Ground Courtyard East

- Inclusions
- Accessible 1:20 ramp
  - 1 feature tree
  - Large shrubs (up to 2m tall) in front of adjacent bedroom windows
  - Irrigated planting
  - Endemic planting in garden beds
  - Accessible seating with backrests and arm rests as shown
  - Steps to activity zone
  - 1x built in BBQ
  - Activity zone: options may include basketball half court, table tennis or other recreation amenity.

Lower Ground Courtyard East		454 m²
Total Area:		
Key	Type	Total Area
	Concrete footpath and ramp	134 m²
	Decomposed granite activity zone	83 m²
	Lawn	93 m²
	Planting	144 m²
	Indicative feature tree	

Scale: 1:200 @ A3



### Planting Quantities (Indicative only)

#### Trees

CODE	BOTANICAL NAME	CENTRES	POT SIZE	QUANTITY
ER	Elaeocarpus reticulatus	As Shown	100L	1
TLa	Tristania laurina	As Shown	500L	1
WFb	Waterhousea floribunda 'Green Avenue'	As Shown	400L	2
				4

#### Understorey

CODE	SPECIES	CENTRES(mm)	POT SIZE
Courtyard Mix	Goodenia ovata Viola hederacea Westringia fruticosa Myoporum parvifolium Lomandra 'Tanika' Chryscephalum apiculatum Carex appressa Dianella caerulea Hymenosporum 'Gold Nugget'	400 = 6 plants/m2	200mm



# Landscape Drawing - 008

## Ground Floor Courtyard East

- Inclusions
- 1 feature tree
  - Large shrubs (up to 2m tall) in front of adjacent bedroom windows
  - Irrigated planting
  - Endemic planting in garden beds
  - Accessible seating with backrests and arm rests as shown
  - 1x built in BBQ

Ground Floor Courtyard East		237 m²
Total Area:		
Key	Type	Total Area
<div></div>	Concrete footpath	136 m²
<div></div>	Synthetic lawn	37 m²
<div></div>	Planting	64 m²
<div></div>	Indicative feature tree	

Scale: 1:200 @ A3



Planting Quantities (Indicative only)				
Trees				
CODE	BOTANICAL NAME	CENTRES	POT SIZE	QUANTITY
ER	Elaeocarpus reticulatus	As Shown	100L	1
TLa	Tristania laurina	As Shown	500L	1
WFb	Waterhousea floribunda 'Green Avenue'	As Shown	400L	1
				3
Understorey				
CODE	SPECIES	CENTRES(mm)	POT SIZE	
Courtyard Mix	Goodenia ovata Viola hederacea Westringia fruticosa Myoporum parvifolium Lomandra 'Tanika' Chryscephalum apiculatum Carex appressa Dianella caerulea Hymenosporum 'Gold Nugget'	400 = 6 plants/m2	200mm	